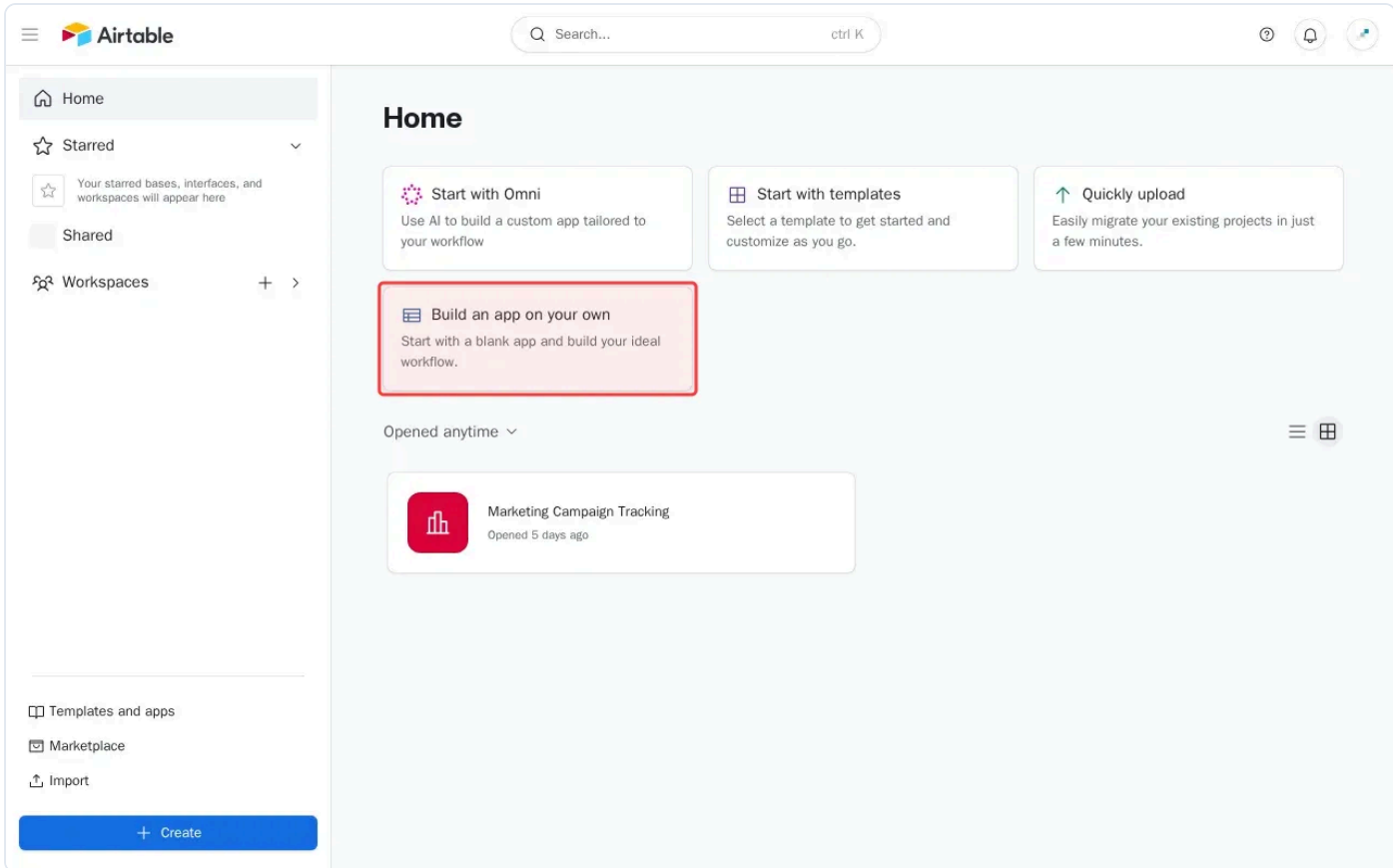


How to add a new table in Airtable

airtable 5 steps · 28s

1 Click 'Create Base from scratch' to start new workspace.



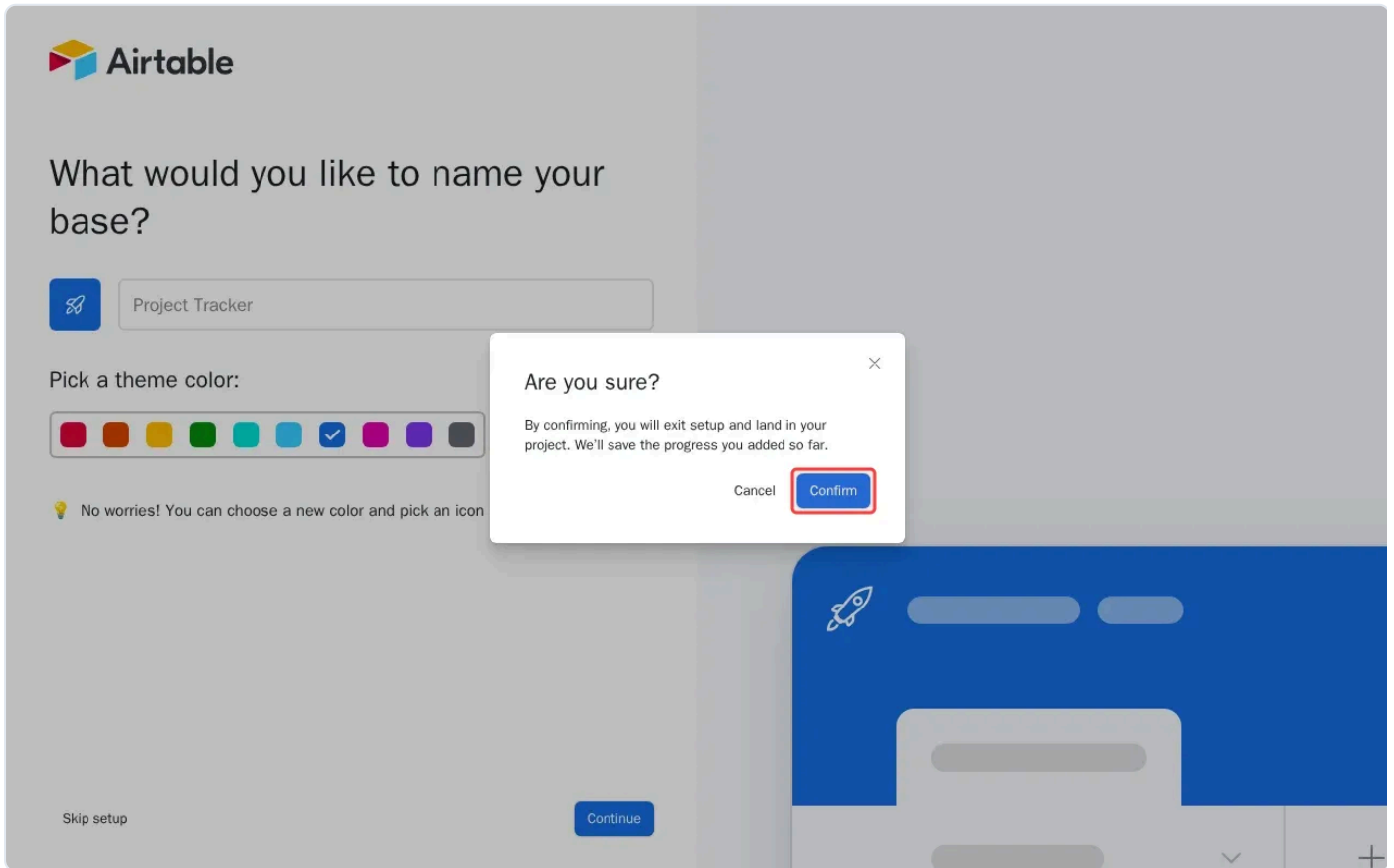
2 Click 'Continue' to complete base setup.

The screenshot shows the Airtable setup interface. At the top left is the Airtable logo. Below it, the text asks "What would you like to name your base?". A text input field contains "Project Tracker" and has a blue icon button to its left. Below the input field, it says "Pick a theme color:" followed by a row of ten color swatches. The blue swatch is selected with a white checkmark. Below the colors, a lightbulb icon and text state: "No worries! You can choose a new color and pick an icon later." At the bottom left is a "Skip setup" button, and at the bottom right is a "Continue" button, which is highlighted with a red rectangular box. On the right side of the screen, a preview of the base interface is shown with a blue header and a white card.

3 Click 'Skip setup' to access the main interface.

This screenshot is identical to the previous one, showing the Airtable setup screen. However, in this version, the "Skip setup" button at the bottom left is highlighted with a red rectangular box, while the "Continue" button is no longer highlighted. The rest of the interface, including the logo, text, input field, color swatches, and preview, remains the same.

4 Click 'Confirm' to complete base setup.



5 Click 'Add or import table' to create new table.

